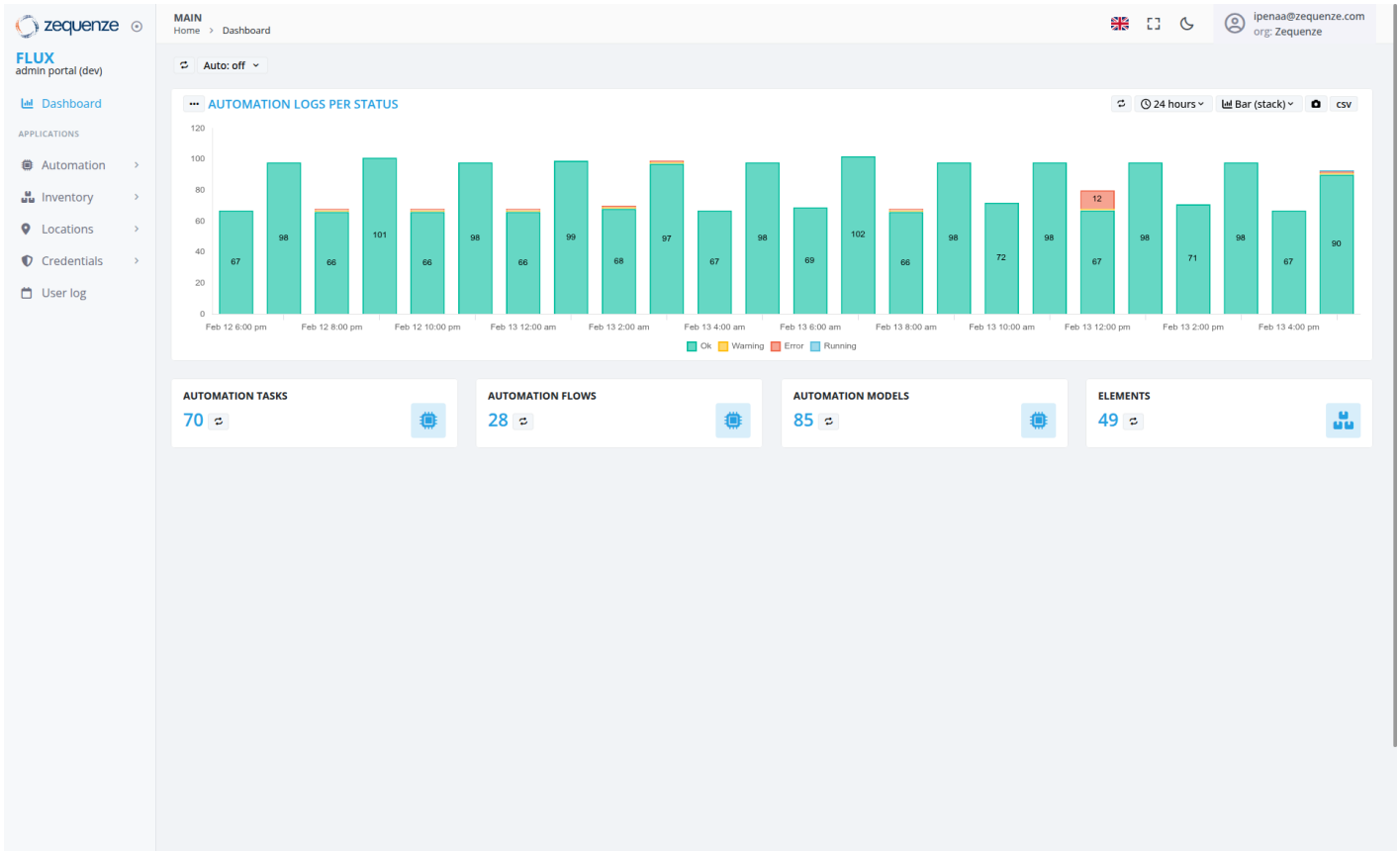


Dashboard: Main



Overview

The Zequence CONTROL Portal Dashboard provides a comprehensive monitoring and management interface for automation systems. This main dashboard view displays real-time automation logs, performance metrics, and system statistics over a 24-hour period, enabling administrators to monitor system health and automation execution status.

Key Features

Real-Time Automation Monitoring

- **Automation Logs Per Status Chart:** Visual representation of automation execution logs displayed as stacked bar charts
- **24-Hour Time Period:** Data visualization covering the last 24 hours with two-hour interval breakdowns

- **Status Color Coding:** Teal/turquoise bars for "Ok" status, coral/red bars for "Error" status, with legend showing Red for Error, Yellow for Warning, Blue for Running, and Teal for Ok states
- **Numerical Data Labels:** Each bar displays specific count values for both Ok and Error statuses
- **Status Distribution:** Chart shows predominantly "Ok" status executions with occasional error instances during the monitoring period

System Metrics Dashboard

Four key metric cards displaying:

- **Automation Tasks:** 70 total tasks
- **Automation Flows:** 28 active flows
- **Automation Models:** 85 configured models
- **Elements:** 49 system elements

UI Elements

Navigation Sidebar

Left-side navigation panel includes:

- **FLUX admin portal (dev):** Main system identifier
- **Dashboard:** Currently active section
- **Applications Section:**
 - Automation
 - Inventory
 - Locations
 - Credentials
 - User log

Top Navigation Bar

- **Breadcrumb Navigation:** Shows "MAIN Home > Dashboard" path
- **User Account:** Displays logged-in user (ipenaa@zequenze.com) with Zequenze organization
- **System Controls:** Language selector (UK flag), full-screen toggle, and dark mode toggle

Chart Controls

- **Auto-refresh Toggle:** Set to "Auto: off" with dropdown options
- **Time Period Selector:** "24 hours" with dropdown for different time ranges
- **Data Export Options:** "Bar (stack)" view selector and CSV export functionality
- **Refresh Button:** Manual refresh control for updating chart data

User Interactions

Dashboard Monitoring

- **Real-time Data Viewing:** Monitor automation execution patterns throughout the day
- **Status Analysis:** Identify peak automation periods and potential issues
- **Time-based Filtering:** Adjust time periods to view different data ranges

Navigation Options

- **Sidebar Navigation:** Click on any menu item to access specific system functions
- **Breadcrumb Usage:** Navigate back to previous sections using breadcrumb links
- **Quick Access:** Use metric cards to jump to detailed views of tasks, flows, models, or elements

Navigation

Access Path

- **URL:** `https://flux-dev.zequenze.com/admin/`
- **Direct Access:** Main landing page after login to the admin portal
- **Breadcrumb:** Home > Dashboard

Related Sections

Users can navigate to:

- Automation management
- Inventory management
- Locations configuration
- Credentials management
- User log functionality
- System configuration settings

Data Displayed

Automation Logs Chart

- **Time Range:** February 12, 6:00 PM through February 13, 4:00 PM (continuous 24-hour period with two-hour intervals)
- **Data Points:** Two-hourly snapshots of automation execution throughout the full day
- **Status Values:** Numerical counts showing both Ok statuses (ranging from 66 to 102 executions) and Error statuses (showing 12 errors at one interval)
- **Activity Pattern:** Generally stable automation activity with most intervals showing 66-102 successful executions, with one interval showing 12 errors and 87 successful executions
- **Status Indicators:** Bars primarily show teal "Ok" status with one coral/red "Error" indicator appearing as a stacked bar segment at February 13, 12:00 PM
- **Status Legend:** Shows Ok (teal), Warning (yellow), Error (red), and Running (blue) status indicators

System Statistics

- **Current Counts:** Real-time metrics for all major system components
- **Resource Overview:** Quick assessment of system configuration and capacity

Actions Available

Dashboard Management

- **Export Data:** Download chart data in CSV format for external analysis
- **Refresh Controls:** Toggle auto-refresh or manually update data using the refresh button
- **View Selection:** Change between different chart visualization modes

System Navigation

- **Deep Dive Analysis:** Click on metric cards to access detailed management interfaces
- **Application Management:** Navigate to Automation, Inventory, Locations, Credentials, or User log sections through the sidebar
- **Configuration Access:** Navigate to settings and configuration sections

Notes/Tips

Best Practices

- **Regular Monitoring:** Check the automation logs chart regularly to identify patterns or anomalies
- **Peak Hour Analysis:** Use the two-hourly breakdown to optimize automation scheduling
- **Status Monitoring:** Watch for color changes in the chart bars that might indicate warnings or errors
- **Error Detection:** Pay attention to stacked bar segments showing error counts that indicate system issues requiring attention

Performance Insights

- **Activity Patterns:** The chart shows generally stable automation execution with values between 66-102 successful executions per two-hour interval
- **System Health:** Predominantly successful executions with one error occurrence (12 errors at 12:00 PM) indicating generally good system performance with isolated issues
- **Resource Planning:** Use the metrics to plan for system capacity and resource allocation
- **Trend Analysis:** Monitor changes in automation volume over time to identify growth patterns and potential issues

System Health Indicators

- **Status Consistency:** Chart shows predominantly successful executions (teal) with one visible error cluster, indicating mostly stable system health with an isolated issue
- **Volume Patterns:** Consistent activity levels throughout the 24-hour period with values remaining relatively stable between intervals
- **Error Visibility:** Stacked bar visualization clearly highlights when errors occur, enabling quick identification of problem periods
- **24/7 Monitoring:** Continuous data collection enables proactive system management and real-time issue identification

Revision #24

Created 2025-11-11 08:18:21 UTC by ipena@zequenze.com

Updated 2026-03-05 22:30:35 UTC by ipena@zequenze.com