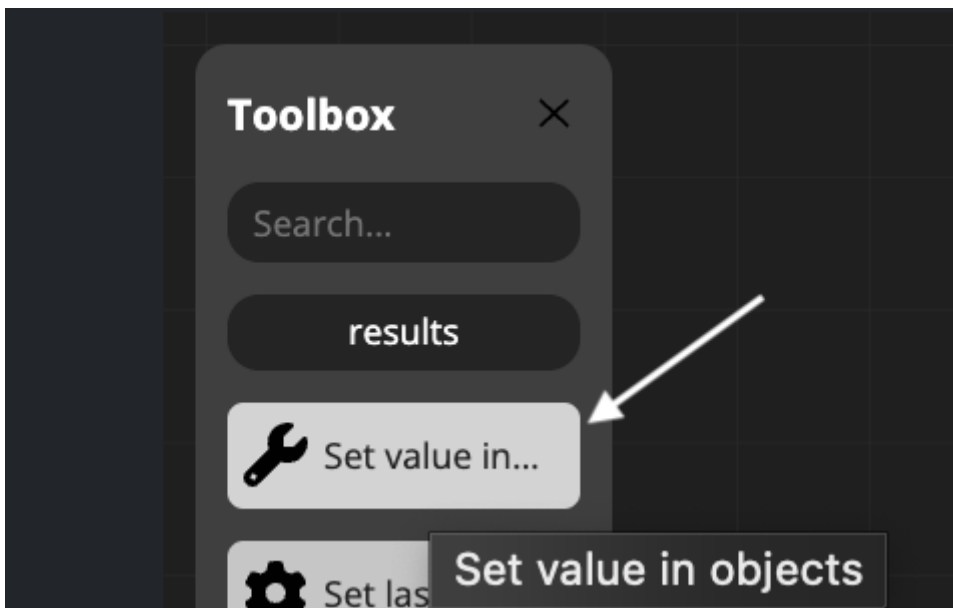


Available steps for management scripts in task elements

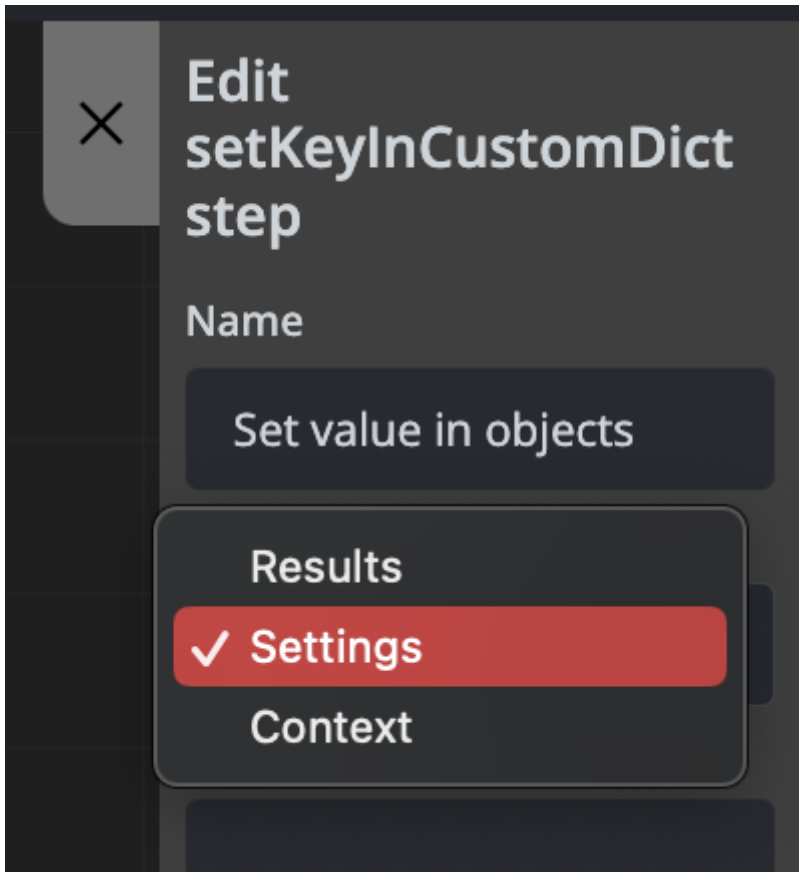
Set Value in Objects



This step allows you to assign different types of values to three available object types within your management scripts.

The image shows a workflow editor interface. The main workspace contains a sequence of steps: a 'Set value in objects' step (highlighted with an orange border and a warning icon), followed by a 'set 'key1'' step. Below these is a conditional step 'if context['key1'] = 12'. The 'true' branch of the condition leads to a 'Pause' step, and the 'false' branch leads to a 'set 'host'' step. A right-hand panel titled 'Edit setKeyInCustomDict step' is open, showing configuration fields: Name (Set value in objects), Dictionary name (Settings), Key name (empty), Value type (String), and Value (empty). A play button is visible at the top of the workflow.

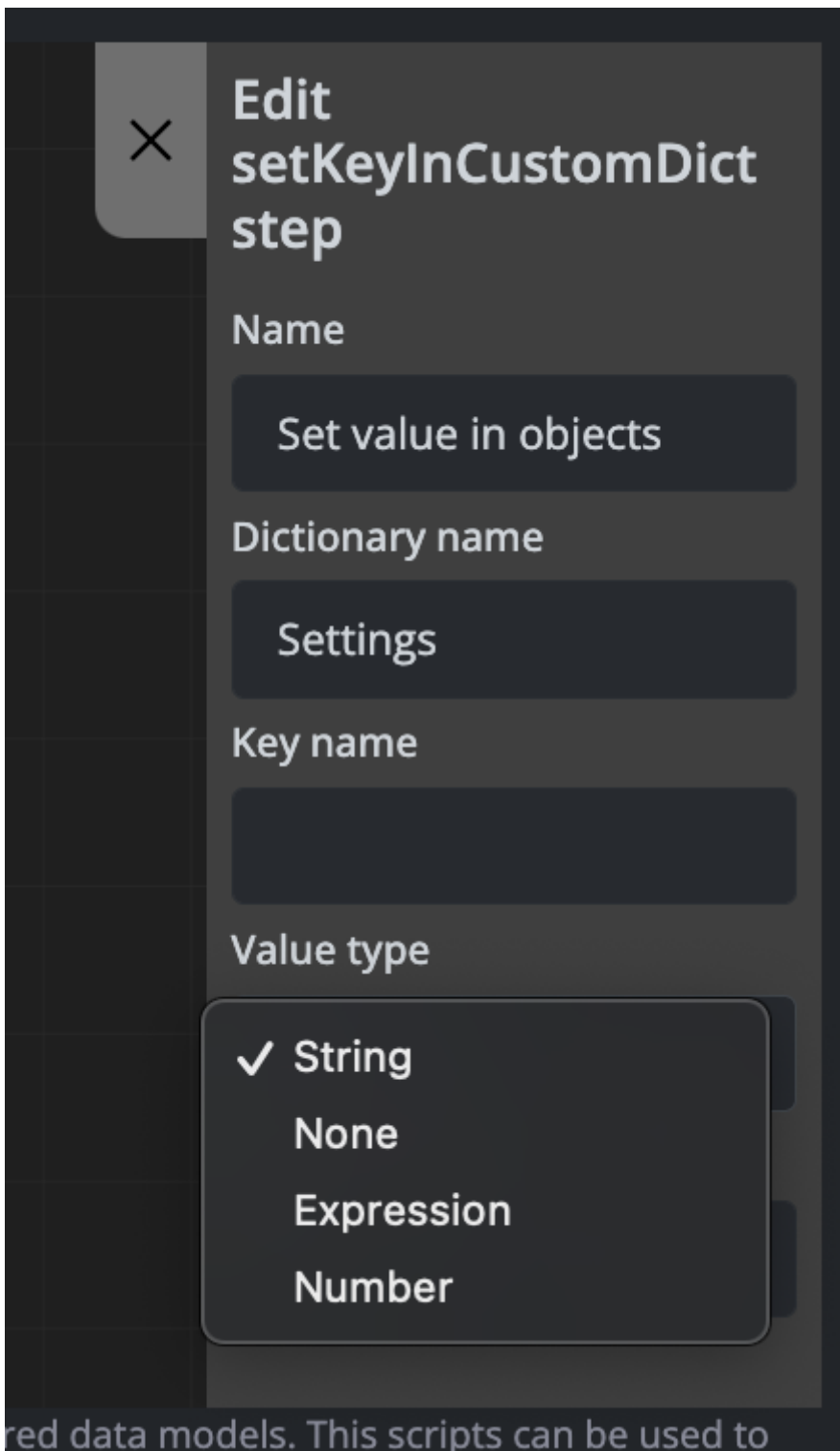
Available Objects



The three available objects where you can set values are:

- **data** - For storing and manipulating data values
- **settings** - For configuration and settings parameters
- **context** - For contextual information and workflow variables

Value Types



You can set values using different data types and sources depending on your requirements.

Examples

Example 1: Setting a Value in the Settings Object

Setting the `uplink_rx_bytes` parameter in the settings object using information stored in the data object:

The screenshot shows a workflow editor with a sequence of four steps. The first step, 'set 'uplink_rx_bytes'', is highlighted with an orange border. A right-hand panel titled 'Edit setKeyInCustomDict step' shows configuration for this step: Name is 'set 'uplink_rx_bytes'', Dictionary name is 'Settings', Key name is 'uplink_rx_bytes', Value type is 'Expression', and Value is 'round(int(data.get('uplir'.

The above configuration generates the following code:

```
settings['uplink_rx_bytes'] = round(int(data.get('uplink_rx_bytes_val', '0')) * 0.000000001, 3)
```

Example 2: Adding an Email Destination to the Context Object

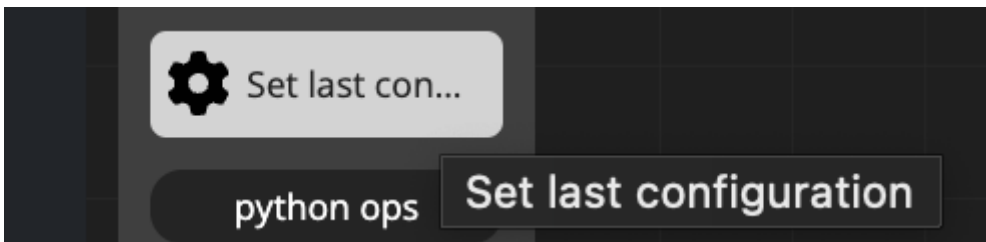
Adding an email destination to the context object:



The above configuration generates the following code:

```
context['email_destination'] = 'user@mail.com'
```

Set Last Configuration in Object

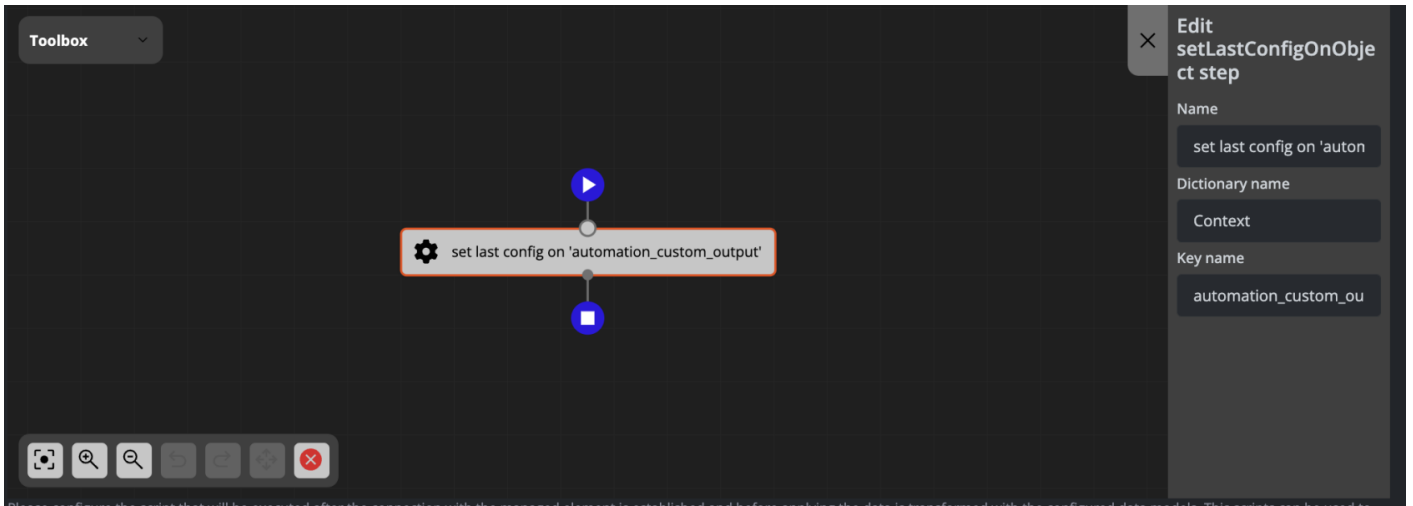


This step allows you to retrieve the last configuration and assign it to one of the available objects. This is useful when you need to access or reference previously saved configuration data within your management scripts.

Examples

Example: Setting Last Configuration in the Context Object

Setting the last configuration in the context object inside the `automation_custom_output` key:



The above configuration generates the following code:

```
context['automation_custom_output'] = config.get_last_config()
```

Revision #2

Created 2026-02-13 23:09:55 UTC by ipena@zequenze.com

Updated 2026-03-05 22:30:35 UTC by ipena@zequenze.com