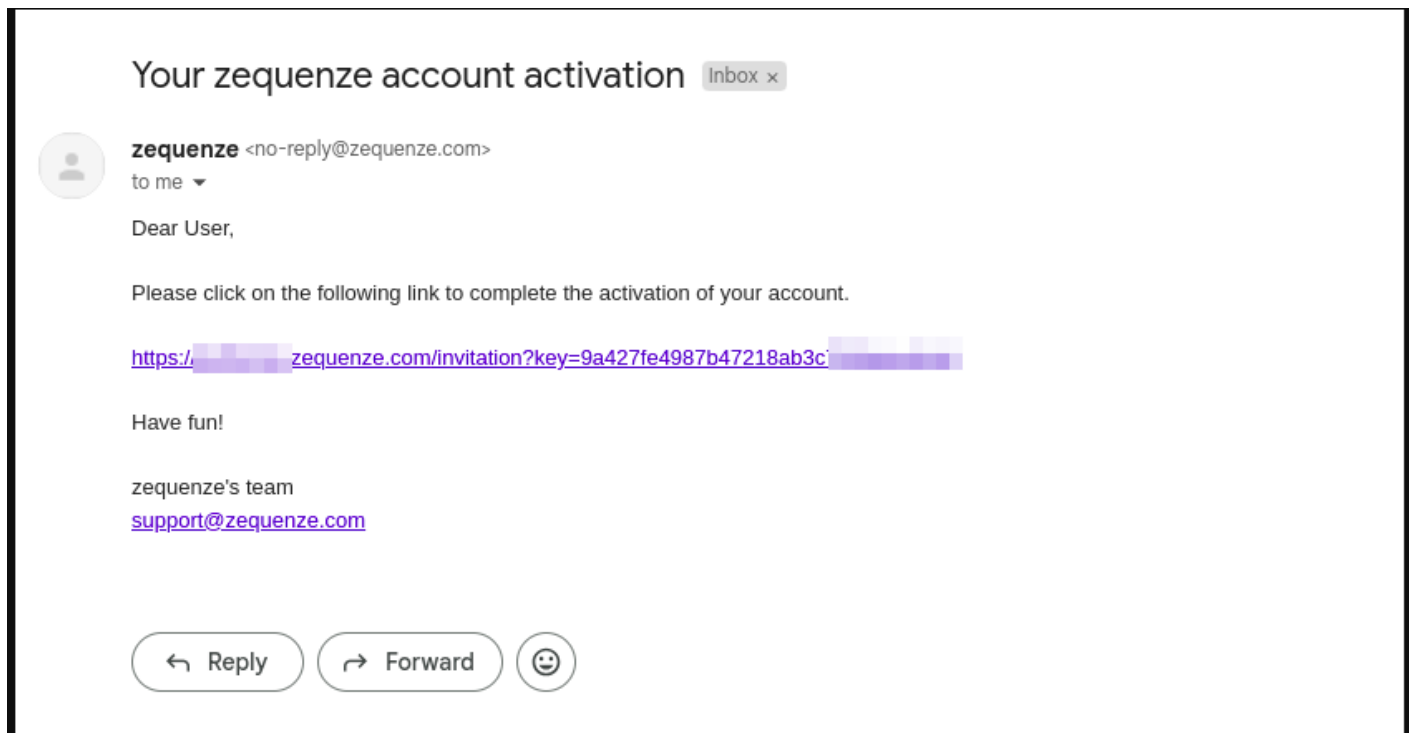


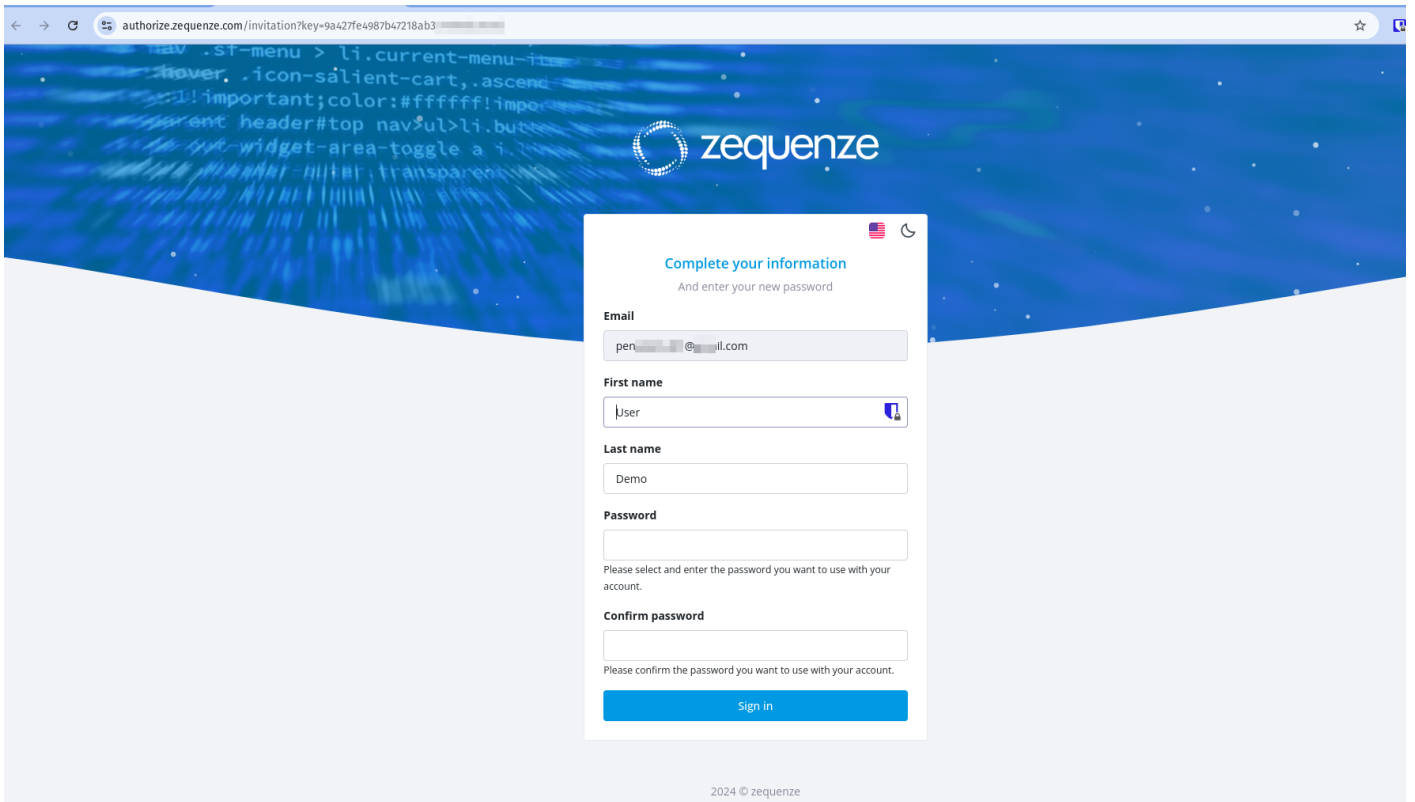
# Knowledge Basic

## Logging into the Platform

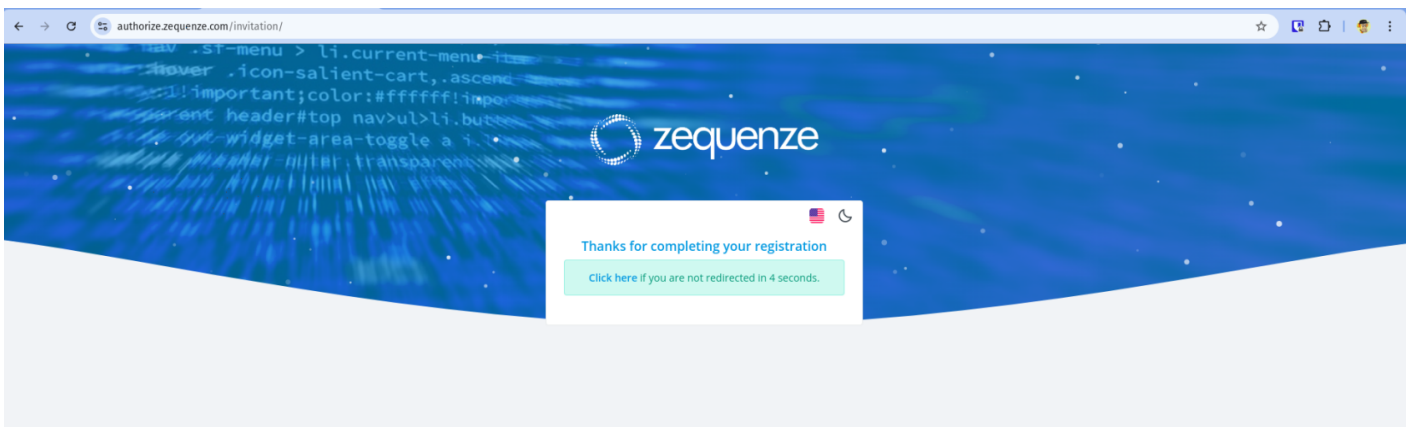
The first step to access CONTROL is to receive an invitation email. This email contains a link that allows you to set your password for future access to the platform.



After receiving the invitation, click the link to set up your password. You will see a page similar to this example:

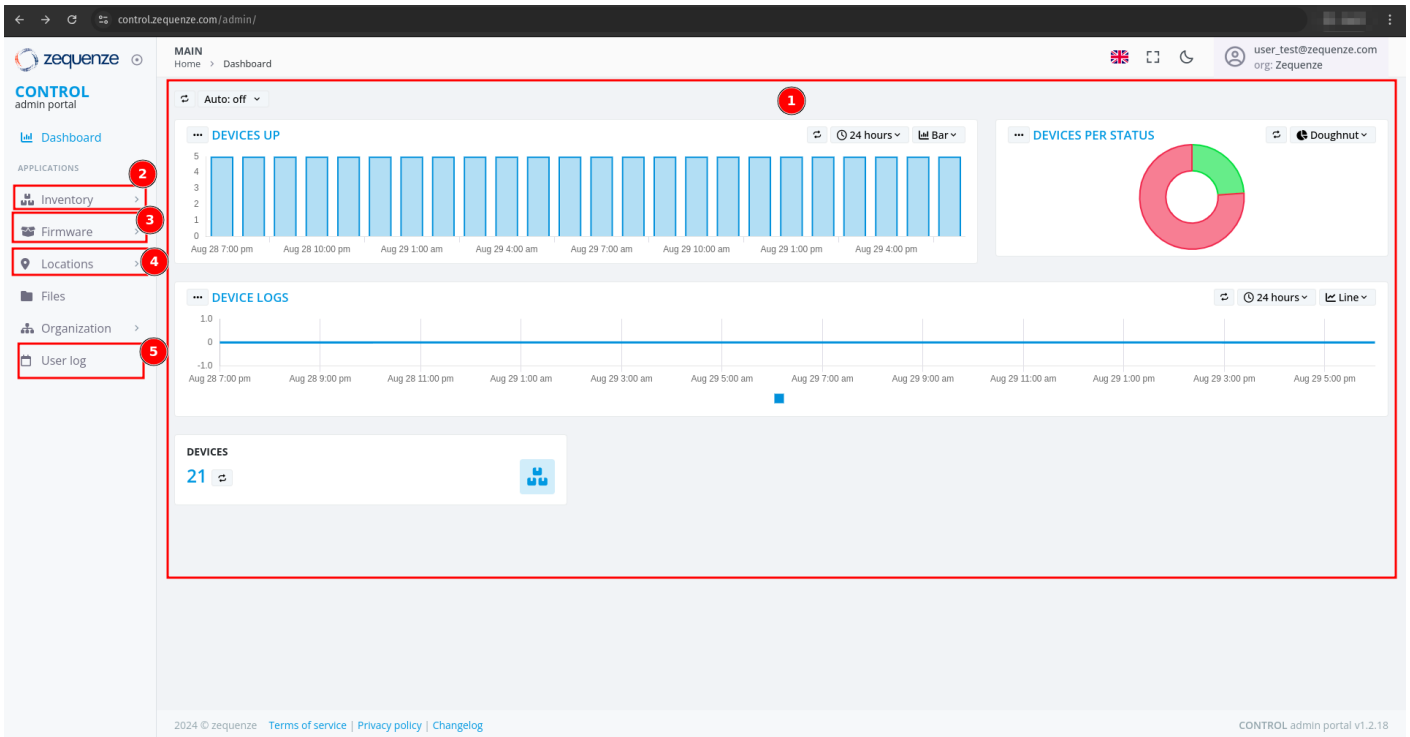


Once the process is complete, you will be redirected to the CONTROL platform:



## Understanding the CONTROL Interface

Now that you're logged into the CONTROL platform, let's explore the available options:



# Main Dashboard

In the center of the screen, you'll find a series of customizable reports in the **Main Dashboard**. These reports include:

- **Devices UP** - Shows currently active devices
- **Devices Per Status** - Displays device status distribution
- **Devices Logs** - Provides access to device log information

All of these reports are customizable if needed to suit your monitoring requirements.

# Navigation Menu

The left-side menu provides access to key platform sections:

1. **Inventory** - View devices, create configurations, and add parameters for each profile. In this section you can view the devices, create configurations, and add the parameters you need for each profile.
2. **Firmware** - Upload different firmware versions for upgrades or downgrades, and customize firmware update workflows. You can upload different versions of firmware for upgrade or downgrade, and customize the workflow for firmware upgrades as needed.
3. **Locations** - Create and manage physical locations using:
  - Geo-localization with coordinates
  - Custom labels to identify device groups
  - Organization by OLT or DOCSIS CMTS connections

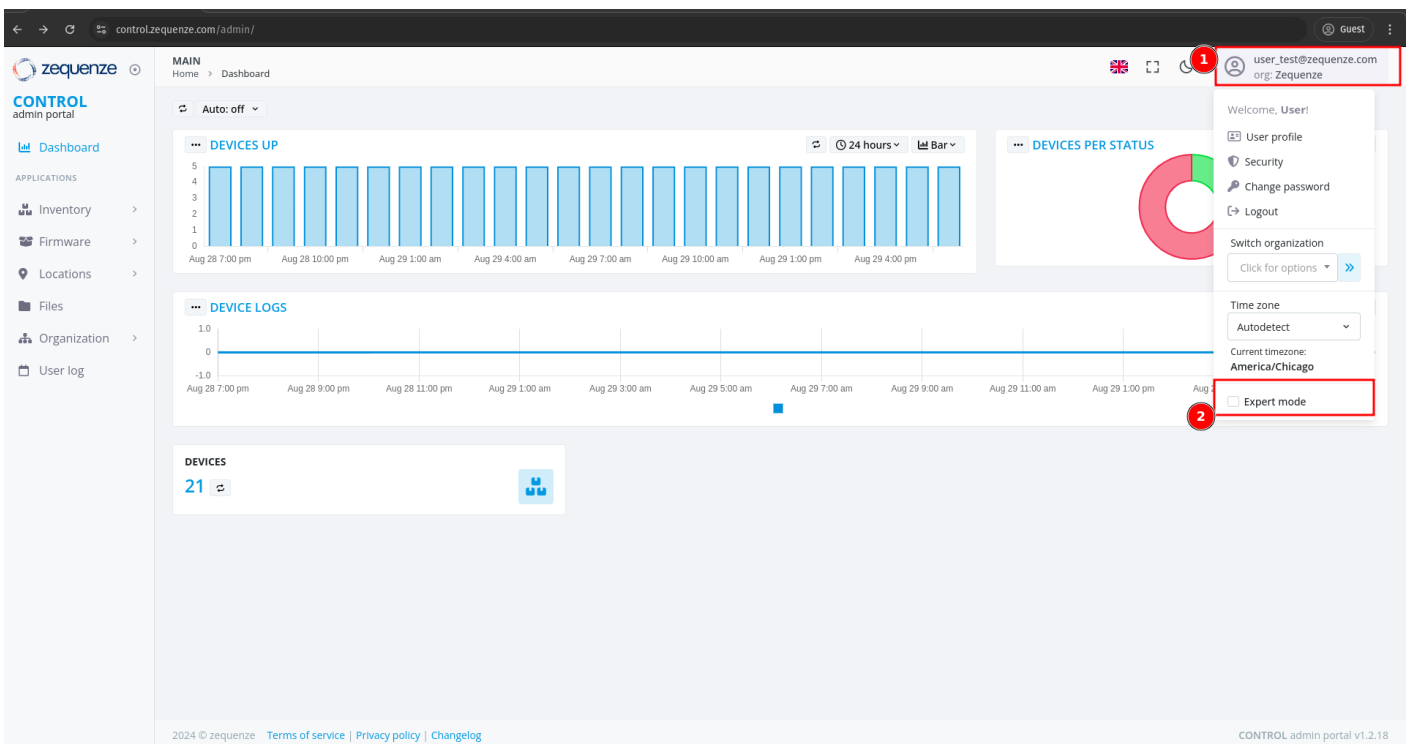
This section is very useful when you need to create different physical locations, geo-localization with coordinates, or custom labels to identify groups of devices connected to the same OLT or DOCSIS CMTS.

4. **User Log** - View all transactions and changes made within the platform. This section allows you to view all transactions or changes that have been made in the platform.

# Enabling Expert Mode

To access advanced features, you need to activate **Expert Mode**:

1. Check the **Expert mode** checkbox
2. Refresh the webpage by pressing **F5** or using your browser's refresh button



This activates additional options and advanced functionality within the CONTROL platform.

This completes the basic overview of the CONTROL platform. The next step is to create a Profile.

Revision #4

Created 2026-02-13 22:15:41 UTC by ipena@zequence.com

Updated 2026-04-09 03:06:06 UTC by mauro@zequence.com