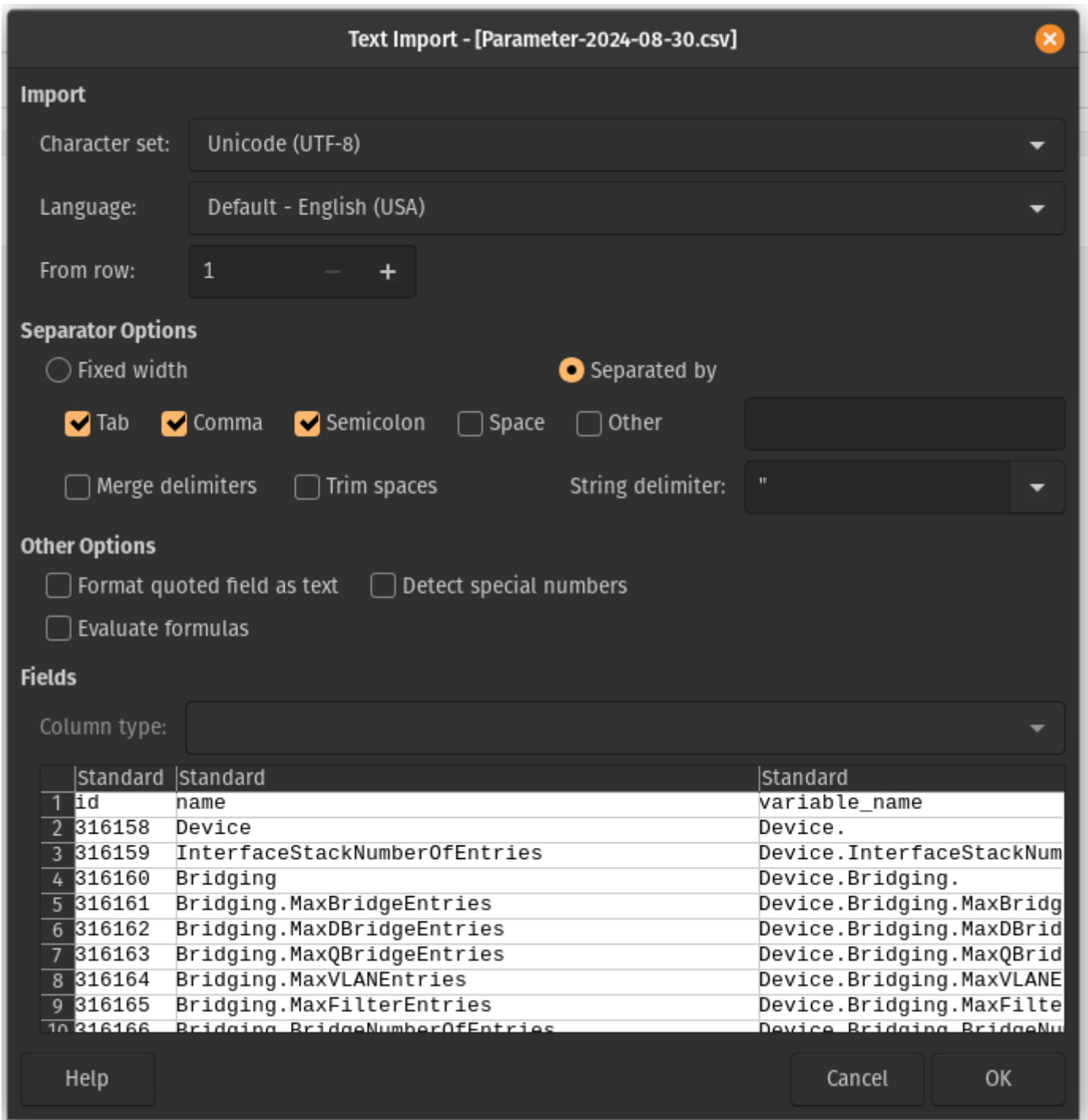


Formatting the Parameters

This guide demonstrates how to format and organize parameters exported from CONTROL using a spreadsheet application. This example uses LibreOffice Calc, but you can apply the same process in Microsoft Excel or similar tools.

Opening the Exported File

When you open the exported parameters file in LibreOffice, a **Text Import** dialog will appear:



For most cases, you can simply click **OK** to accept the default import settings. If you're using Excel, you may need to use the "Import Data" function to load the file properly.

Understanding the Parameter Sheet

After importing, you'll see a spreadsheet with many columns and parameters:

Parameter-2024-08-30.csv - LibreOffice Calc

A	B	C	D	E	F	G	H	I	J	K	L	M
id	name	variable_name	short_name	is_active	template	synthetic	type	widget_size	model_name	mgmt_type	ephemeral	mask_value
1	316158 Device	Device		1	1		Ostring					0
2	316159 InterfaceStackNumberOfEntries	Device.InterfaceStackNumberOfEntries		1	1		Opositive			positive		0
3	316160 Bridging	Device.Bridging		1	1		Ostring					0
4	316161 Bridging.MaxBridgeEntries	Device.Bridging.MaxBridgeEntries		1	1		Opositive			positive		0
5	316162 Bridging.MaxQBridgeEntries	Device.Bridging.MaxQBridgeEntries		1	1		Opositive			positive		0
6	316163 Bridging.MaxQBridgeEntries	Device.Bridging.MaxQBridgeEntries		1	1		Opositive			positive		0
7	316164 Bridging.MaxVLANEntries	Device.Bridging.MaxVLANEntries		1	1		Opositive			positive		0
8	316165 Bridging.MaxFilterEntries	Device.Bridging.MaxFilterEntries		1	1		Opositive			positive		0
9	316166 Bridging.BridgeNumberOfEntries	Device.Bridging.BridgeNumberOfEntries		1	1		Opositive			positive		0
10	316167 Bridging.FilterNumberOfEntries	Device.Bridging.FilterNumberOfEntries		1	1		Ostring			positive		0
11	316168 Bridging.Bridge	Device.Bridging.Bridge		1	1		Ostring					0
12	316169 Bridging.Bridge.1	Device.Bridging.Bridge.1		1	1		Ostring					0
13	316170 Bridging.Bridge.1.Enable	Device.Bridging.Bridge.1.Enable		1	1		Oboolean			boolean		0
14	316171 Bridging.Bridge.1.Status	Device.Bridging.Bridge.1.Status		1	1		Ostring					0
15	316172 Bridging.Bridge.1.Alias	Device.Bridging.Bridge.1.Alias		1	1		Ostring					0
16	316173 Bridging.Bridge.1.Standard	Device.Bridging.Bridge.1.Standard		1	1		Ostring					0
17	316174 Bridging.Bridge.1.PortNumberOfEntries	Device.Bridging.Bridge.1.PortNumberOfEntries		1	1		Opositive			positive		0
18	316175 Bridging.Bridge.1.VLANNumberOfEntries	Device.Bridging.Bridge.1.VLANNumberOfEntries		1	1		Opositive			positive		0
19	316176 Bridging.Bridge.1.VLANPortNumberOfEntries	Device.Bridging.Bridge.1.VLANPortNumberOfEntries		1	1		Opositive			positive		0
20	316177 Bridging.Bridge.1.Port	Device.Bridging.Bridge.1.Port		1	1		Ostring					0
21	316178 Bridging.Bridge.1.Port.1	Device.Bridging.Bridge.1.Port.1		1	1		Ostring					0
22	316179 Bridging.Bridge.1.Port.1.Enable	Device.Bridging.Bridge.1.Port.1.Enable		1	1		Oboolean			boolean		0
23	316180 Bridging.Bridge.1.Port.1.Status	Device.Bridging.Bridge.1.Port.1.Status		1	1		Ostring					0
24	316181 Bridging.Bridge.1.Port.1.Alias	Device.Bridging.Bridge.1.Port.1.Alias		1	1		Ostring					0
25	316182 Bridging.Bridge.1.Port.1.Name	Device.Bridging.Bridge.1.Port.1.Name		1	1		Ostring					0
26	316183 Bridging.Bridge.1.Port.1.LastChange	Device.Bridging.Bridge.1.Port.1.LastChange		1	1		Opositive			positive		0
27	316184 Bridging.Bridge.1.Port.1.LowerLayers	Device.Bridging.Bridge.1.Port.1.LowerLayers		1	1		Ostring					0
28	316185 Bridging.Bridge.1.Port.1.ManagementPort	Device.Bridging.Bridge.1.Port.1.ManagementPort		1	1		Oboolean			boolean		0
29	316186 Bridging.Bridge.1.Port.1.DefaultUserPriority	Device.Bridging.Bridge.1.Port.1.DefaultUserPriority		1	1		Opositive			positive		0
30	316187 Bridging.Bridge.1.Port.1.PriorityRegeneration	Device.Bridging.Bridge.1.Port.1.PriorityRegeneration		1	1		Ostring					0
31	316188 Bridging.Bridge.1.Port.1.PortState	Device.Bridging.Bridge.1.Port.1.PortState		1	1		Ostring					0
32	316189 Bridging.Bridge.1.Port.1.PVID	Device.Bridging.Bridge.1.Port.1.PVID		1	1		Opositive			positive		0
33	316190 Bridging.Bridge.1.Port.1.AcceptableFrameTypes	Device.Bridging.Bridge.1.Port.1.AcceptableFrameTypes		1	1		Ostring					0
34	316191 Bridging.Bridge.1.Port.1.IngressFiltering	Device.Bridging.Bridge.1.Port.1.IngressFiltering		1	1		Oboolean			boolean		0
35	316192 Bridging.Bridge.1.Port.1.Priority Tagging	Device.Bridging.Bridge.1.Port.1.Priority Tagging		1	1		Oboolean			boolean		0
36	316193 Bridging.Bridge.1.Port.1.X_ZTE-COM_VLANEnable	Device.Bridging.Bridge.1.Port.1.X_ZTE-COM_VLANEnable		1	1		Oboolean			boolean		0
37	316194 Bridging.Bridge.1.Port.1.X_ZTE-COM_VLANID	Device.Bridging.Bridge.1.Port.1.X_ZTE-COM_VLANID		1	1		Opositive			positive		0
38	316195 Bridging.Bridge.1.Port.1.X_ZTE-COM_8021P	Device.Bridging.Bridge.1.Port.1.X_ZTE-COM_8021P		1	1		Opositive			positive		0
39	316196 Bridging.Bridge.1.Port.1.Stats	Device.Bridging.Bridge.1.Port.1.Stats		1	1		Ostring					0
40	316197 Bridging.Bridge.1.Port.1.Stats.BytesSent	Device.Bridging.Bridge.1.Port.1.Stats.BytesSent		1	1		Oxsd:string			xsd:string		0
41	316198 Bridging.Bridge.1.Port.1.Stats.BytesReceived	Device.Bridging.Bridge.1.Port.1.Stats.BytesReceived		1	1		Oxsd:string			xsd:string		0
42	316199 Bridging.Bridge.1.Port.1.Stats.PacketsSent	Device.Bridging.Bridge.1.Port.1.Stats.PacketsSent		1	1		Oxsd:string			xsd:string		0
43	316200 Bridging.Bridge.1.Port.1.Stats.PacketsReceived	Device.Bridging.Bridge.1.Port.1.Stats.PacketsReceived		1	1		Oxsd:string			xsd:string		0
44	316201 Bridging.Bridge.1.Port.1.Stats.ErrorsSent	Device.Bridging.Bridge.1.Port.1.Stats.ErrorsSent		1	1		Opositive			positive		0
45	316202 Bridging.Bridge.1.Port.1.Stats.ErrorsReceived	Device.Bridging.Bridge.1.Port.1.Stats.ErrorsReceived		1	1		Opositive			positive		0
46	316203 Bridging.Bridge.1.Port.1.Stats.UnicastPacketsSent	Device.Bridging.Bridge.1.Port.1.Stats.UnicastPacketsSent		1	1		Oxsd:string			xsd:string		0

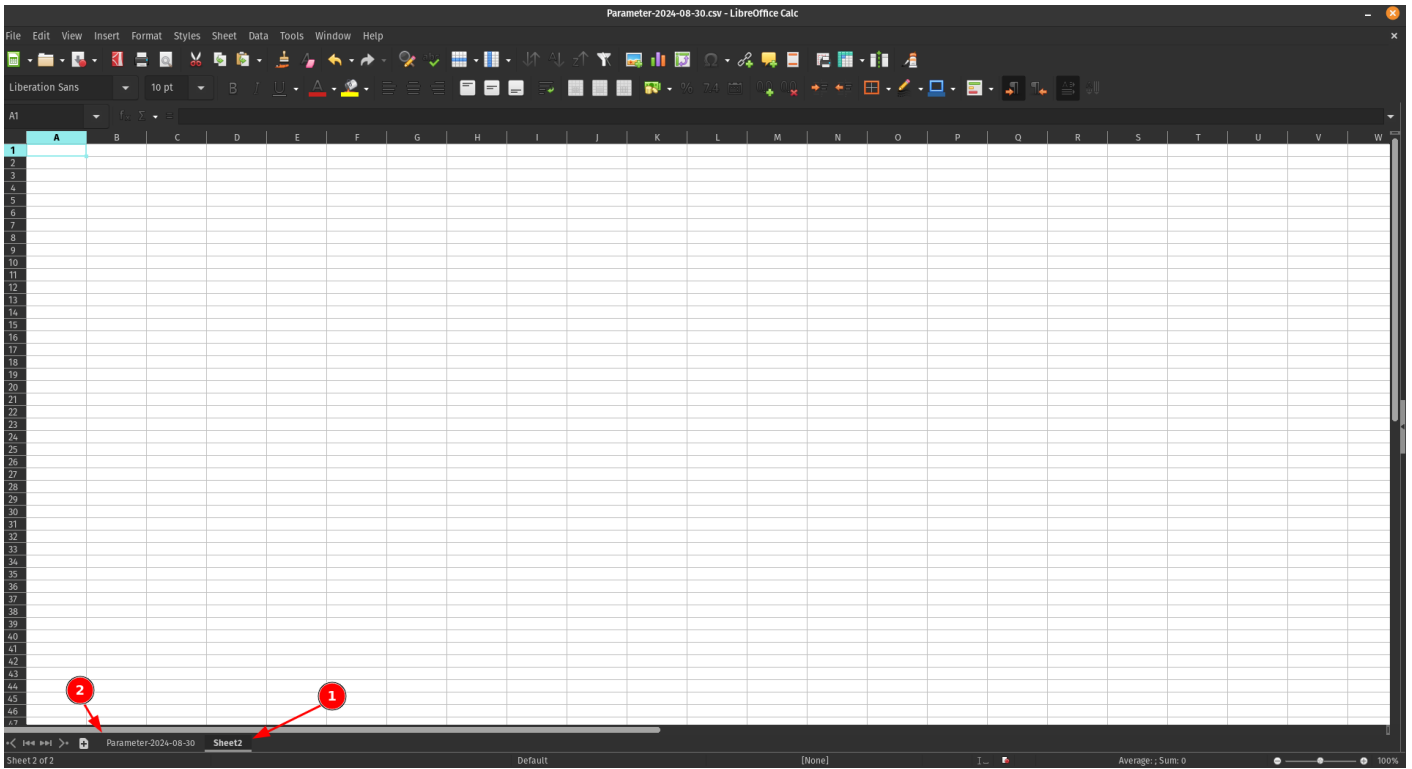
Don't be intimidated by the number of parameters—once you understand the structure, working with them becomes straightforward.

Extracting Key Columns

For this workflow, you'll need to create a new sheet and copy only four specific columns from the original data.

Step 1: Create a New Sheet

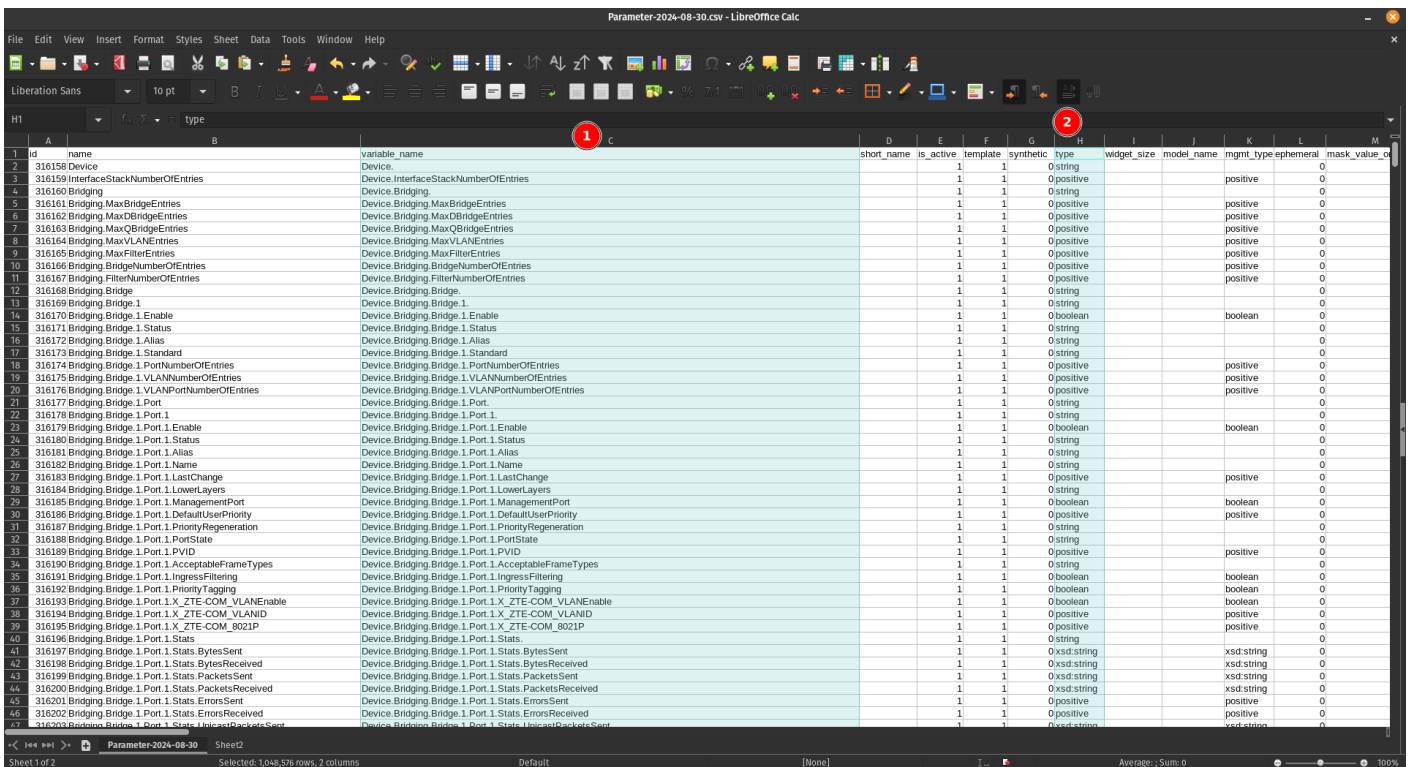
Create a second sheet (Sheet2) in your workbook to organize the filtered data:



1. **Sheet2** - Your new working sheet
2. **Sheet1** - The original sheet with all parameters

Step 2: Identify the Required Columns

From the original sheet, locate and copy the following four columns:



1. Column C

2. Column H
3. Column R
4. Column AY

Step 3: Paste into Sheet2

Copy these four columns and paste them into Sheet2:

1	variable_name	2	type	3	read_only	4	discovered_value
2	Device		string		1		
3	Device.InterfaceStackNumberOfEntries		positive		141		
4	Device.Bridging		string		1		
5	Device.Bridging.MaxBridgeEntries		positive		14		
6	Device.Bridging.MaxQBridgeEntries		positive		14		
7	Device.Bridging.MaxQBridgeEntries		positive		14		
8	Device.Bridging.MaxVLANEntries		positive		14		
9	Device.Bridging.MaxFilterEntries		positive		116		
10	Device.Bridging.BridgeNumberOFEntries		positive		11		
11	Device.Bridging.FilterNumberOFEntries		positive		10		
12	Device.Bridging.Bridge		string		1		
13	Device.Bridging.Bridge.1		string		1		
14	Device.Bridging.Bridge.1.Enable		boolean		0		
15	Device.Bridging.Bridge.1.Status		string		1.Enabled		
16	Device.Bridging.Bridge.1.Alias		string		0cpe-1		
17	Device.Bridging.Bridge.1.Standard		string		0802.1Q-2011		
18	Device.Bridging.Bridge.1.PortNumberOFEntries		positive		14		
19	Device.Bridging.Bridge.1.VLANNumberOFEntries		positive		10		
20	Device.Bridging.Bridge.1.VLANPortNumberOFEntries		positive		10		
21	Device.Bridging.Bridge.1.Port		string		1		
22	Device.Bridging.Bridge.1.Port.1		string		1		
23	Device.Bridging.Bridge.1.Port.1.Enable		boolean		0		
24	Device.Bridging.Bridge.1.Port.1.Status		string		1.Up		
25	Device.Bridging.Bridge.1.Port.1.Alias		string		0cpe-1		
26	Device.Bridging.Bridge.1.Port.1.Name		string		1.DEV.BRIDGING.BR1.BRPORT1		
27	Device.Bridging.Bridge.1.Port.1.LastChange		positive		1.268694		
28	Device.Bridging.Bridge.1.Port.1.LowestLayers		string		0.Device.Bridging.Bridge.1.Port.2.Device.Bridging.Bridge.1.Port.3.Device.Bridging.Bridge.1.Port.4.Device.Bridging.Bridge.1.Port.5.Device.Bridging.Bridge.1.Port.6.Device.Bridging.Bridge.1.Port.7.Device.Bridging.Bridge.1.Port.8.Device.Bridging.Bridge.1.Port.9.Device.Bridging.Bridge.1.Port.10		
29	Device.Bridging.Bridge.1.Port.1.ManagementPort		boolean		0		
30	Device.Bridging.Bridge.1.Port.1.DefaultUserPriority		positive		0		
31	Device.Bridging.Bridge.1.Port.1.PriorityRegeneration		string		0.0.1.2.3.4.5.6.7		
32	Device.Bridging.Bridge.1.Port.1.PortState		string		1.Forwarding		
33	Device.Bridging.Bridge.1.Port.1.PVID		positive		0		
34	Device.Bridging.Bridge.1.Port.1.AcceptableFrameTypes		string		0.AdmitAll		
35	Device.Bridging.Bridge.1.Port.1.IngressFiltering		boolean		0		
36	Device.Bridging.Bridge.1.Port.1.PriorityTagging		boolean		0		
37	Device.Bridging.Bridge.1.Port.1.X_ZTE-COM_VLANEnable		boolean		0		
38	Device.Bridging.Bridge.1.Port.1.X_ZTE-COM_VLANID		positive		0		
39	Device.Bridging.Bridge.1.Port.1.X_ZTE-COM_8021P		positive		0		
40	Device.Bridging.Bridge.1.Port.1.Stats		string		1		
41	Device.Bridging.Bridge.1.Port.1.Stats.BytesSent		xsd:string		1141244		
42	Device.Bridging.Bridge.1.Port.1.Stats.BytesReceived		xsd:string		11486994		
43	Device.Bridging.Bridge.1.Port.1.Stats.PacketsSent		xsd:string		11379		
44	Device.Bridging.Bridge.1.Port.1.Stats.PacketsReceived		xsd:string		119173		
45	Device.Bridging.Bridge.1.Port.1.Stats.ErrorsSent		positive		10		
46	Device.Bridging.Bridge.1.Port.1.Stats.ErrorsReceived		positive		10		
47	Device.Bridging.Bridge.1.Port.1.Stats.UnicastPacketsSent		xsd:string		10		

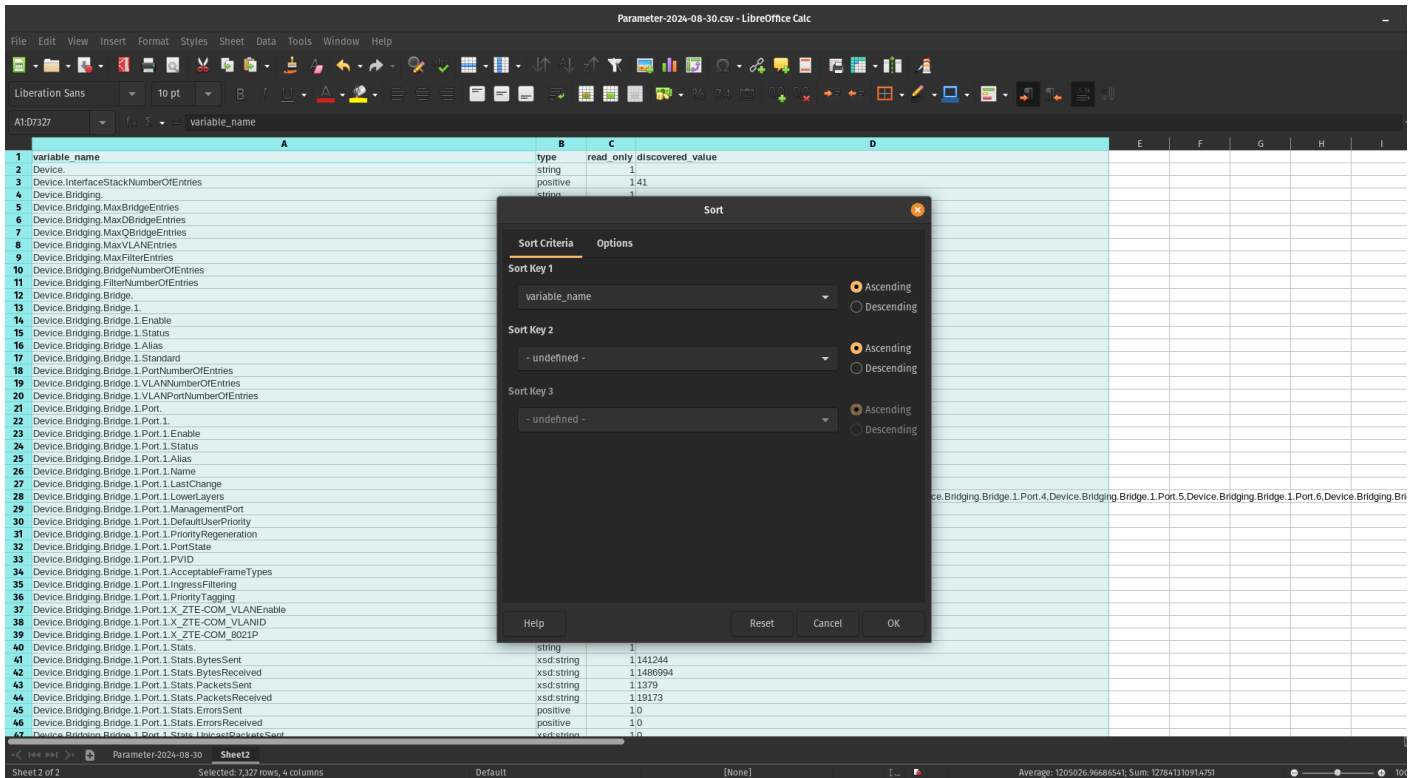
Understanding the Column Structure

Your new sheet now contains four essential columns:

1. **variable_name** - Lists all parameters available for devices using this software version
2. **type** - Indicates the data type of each parameter (string, integer, boolean, etc.) and tells us what kind of parameter it is
3. **read_only** - Shows whether the parameter is read-only or can be modified. Some parameters are only read-only and you can't write to them
4. **discovered_value** - Displays the current value of each parameter (for example, the name of one SSID for a WiFi 2.4GHz network)

Sorting the Parameters

To make the parameters easier to work with, sort them alphabetically by the first column (variable_name):



Note: Make sure to include the header row when sorting so the column titles remain in place.

Result

After sorting, your parameters will be organized alphabetically:

Parameter-2024-08-30.csv - LibreOffice Calc

variable_name	type	read_only	discovered_value
Device	string	1	
Device.Bridging	string	1	
Device.Bridging.Bridge	string	1	
Device.Bridging.Bridge.1	string	1	
Device.Bridging.Bridge.1.Alias	string	0	cpe-1
Device.Bridging.Bridge.1.Enable	boolean	0	1
Device.Bridging.Bridge.1.Port	string	1	
Device.Bridging.Bridge.1.Port.1	string	1	
Device.Bridging.Bridge.1.Port.1.AcceptableFrameTypes	string	0	AdmitAll
Device.Bridging.Bridge.1.Port.1.Alias	string	0	cpe-1
Device.Bridging.Bridge.1.Port.1.DefaultUserPriority	positive	0	0
Device.Bridging.Bridge.1.Port.1.Enable	boolean	0	1
Device.Bridging.Bridge.1.Port.1.IngressFiltering	boolean	0	0
Device.Bridging.Bridge.1.Port.1.LastChange	positive	1	1266994
Device.Bridging.Bridge.1.Port.1.LowLayers	string	0	Device.Bridging.Bridge.1.Port.2,Device.Bridging.Bridge.1.Port.3,Device.Bridging.Bridge.1.Port.4,Device.Bridging.Bridge.1.Port.5,Device.Bridging.Bridge.1.Port.6,Device.Bridging.Bridge.1.Port.7
Device.Bridging.Bridge.1.Port.1.ManagementPort	boolean	0	1
Device.Bridging.Bridge.1.Port.1.Name	string	1	DEV.BRIDGING.BR1.BRPORT1
Device.Bridging.Bridge.1.Port.1.PortState	string	1	Forwarding
Device.Bridging.Bridge.1.Port.1.PriorityRegeneration	string	0	1,2,3,4,5,6,7
Device.Bridging.Bridge.1.Port.1.PriorityTagging	boolean	0	0
Device.Bridging.Bridge.1.Port.1.PVID	positive	0	1
Device.Bridging.Bridge.1.Port.1.Stats	string	1	
Device.Bridging.Bridge.1.Port.1.Stats.BroadcastPacketsReceived	xsd:string	1	10
Device.Bridging.Bridge.1.Port.1.Stats.BroadcastPacketsSent	xsd:string	1	10
Device.Bridging.Bridge.1.Port.1.Stats.BytesReceived	xsd:string	1	11486994
Device.Bridging.Bridge.1.Port.1.Stats.BytesSent	xsd:string	1	1141244
Device.Bridging.Bridge.1.Port.1.Stats.DiscardPacketsReceived	positive	1	10
Device.Bridging.Bridge.1.Port.1.Stats.DiscardPacketsSent	positive	1	10
Device.Bridging.Bridge.1.Port.1.Stats.ErrorsReceived	positive	1	10
Device.Bridging.Bridge.1.Port.1.Stats.ErrorsSent	positive	1	10
Device.Bridging.Bridge.1.Port.1.Stats.MulticastPacketsReceived	xsd:string	1	10
Device.Bridging.Bridge.1.Port.1.Stats.MulticastPacketsSent	xsd:string	1	10
Device.Bridging.Bridge.1.Port.1.Stats.PacketsReceived	xsd:string	1	119173
Device.Bridging.Bridge.1.Port.1.Stats.PacketsSent	xsd:string	1	11379
Device.Bridging.Bridge.1.Port.1.Stats.UnicastPacketsReceived	xsd:string	1	10
Device.Bridging.Bridge.1.Port.1.Stats.UnicastPacketsSent	xsd:string	1	10
Device.Bridging.Bridge.1.Port.1.Stats.UnknownProtoPacketsReceived	positive	1	10
Device.Bridging.Bridge.1.Port.1.Status	string	1	Up
Device.Bridging.Bridge.1.Port.1.X_ZTE-COM_8021P	positive	0	0
Device.Bridging.Bridge.1.Port.1.X_ZTE-COM_VLANEnable	boolean	0	0
Device.Bridging.Bridge.1.Port.1.X_ZTE-COM_VLANID	positive	0	0
Device.Bridging.Bridge.1.Port.10	string	1	
Device.Bridging.Bridge.1.Port.10.AcceptableFrameTypes	string	0	AdmitAll
Device.Bridging.Bridge.1.Port.10.Alias	string	0	cpe-10
Device.Bridging.Bridge.1.Port.10.DefaultUserPriority	positive	0	0
Device.Bridging.Bridge.1.Port.10.Enable	boolean	0	1

Next Steps

With your parameters now organized and easy to navigate, you can begin creating configuration profiles by selecting the specific parameters that meet your requirements.

Revision #4

Created 2026-02-13 22:20:07 UTC by ipena@zequence.com

Updated 2026-04-09 03:10:47 UTC by mauro@zequence.com