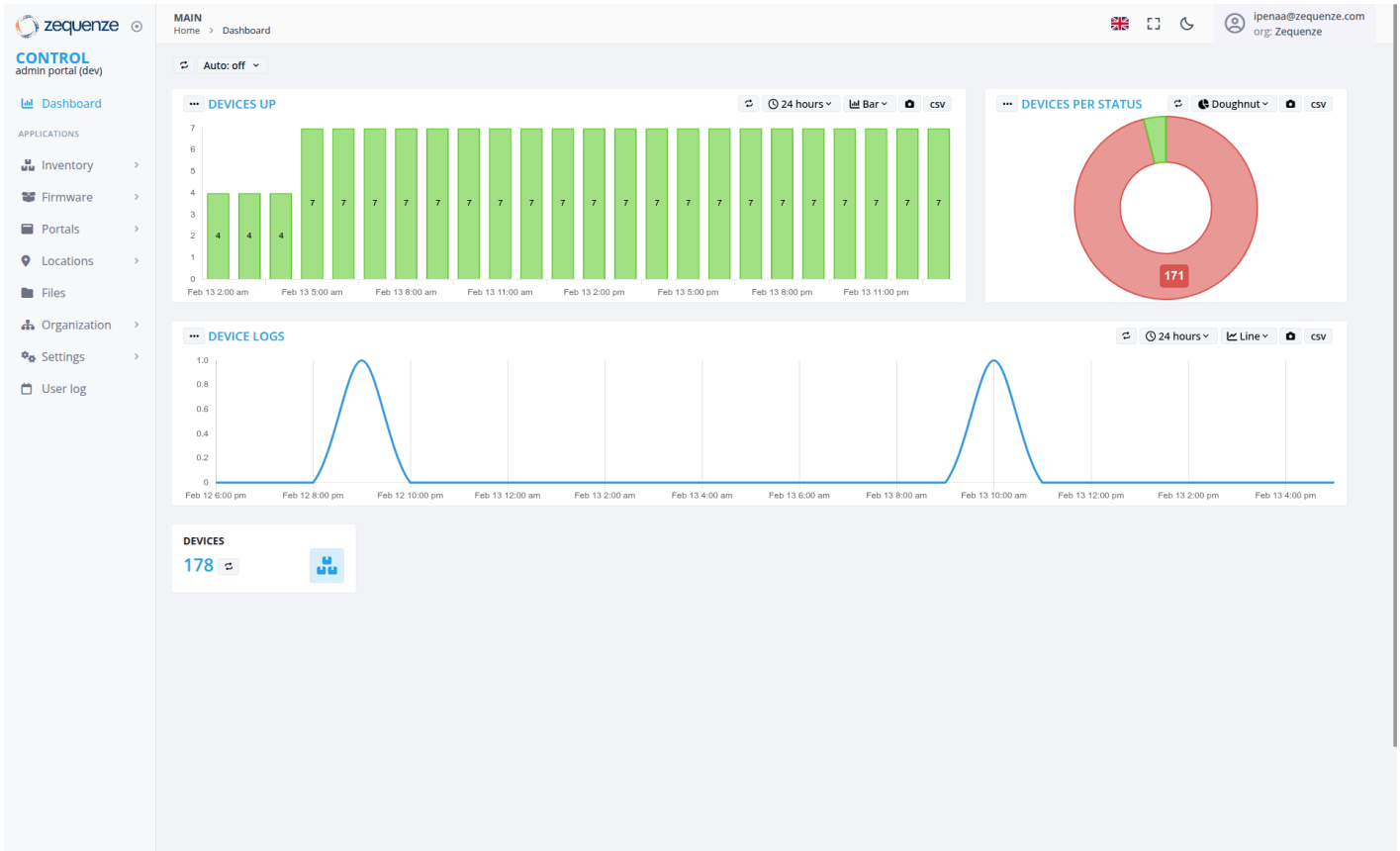


# Dashboard: Main



## Overview

The Zequnze CONTROL Portal Dashboard provides a comprehensive real-time overview of device management and monitoring capabilities. This main dashboard serves as the central hub for administrators to monitor device status, track performance metrics, and access various system management tools.

## Key Features

### Real-Time Device Monitoring

- **Devices Up Chart:** Visual bar chart showing device availability over a 24-hour period
- **Device Logs Graph:** Line chart displaying device activity and log patterns over time
- **Devices Per Status:** Pie chart visualization showing the distribution of device statuses
- **Live Device Count:** Real-time counter showing total devices (178)

# Navigation & Access Control

- Left sidebar navigation with organized menu structure
- User profile display (ipenaa@zequenze.com) with Zequenze organization access
- Language selection (EN) and theme toggle options
- Auto-refresh functionality with manual override controls

## UI Elements

### Dashboard Widgets

- **Devices Up Widget:** Green bar chart showing consistent values with 4 devices up at early time periods and 7 devices up across most time periods, displaying data points from Feb 13 2:00 am through Feb 13 11:00 pm
- **Device Logs Widget:** Blue line graph showing activity patterns spanning from Feb 12 6:00 pm through Feb 14 4:00 pm, with significant spikes reaching approximately 1.0 events around Feb 12 8:00 pm and Feb 13 8:00 pm
- **Devices Per Status Widget:** Donut chart with prominent red section showing 171 devices and a small green section
- **Device Counter:** Large numeric display (178) with refresh icon

### Navigation Sidebar

- **Control Section:** Dashboard (currently active)
- **Applications Menu:**
  - Inventory
  - Firmware
  - Portals
  - Locations
  - Files
  - Organization
  - Settings
  - User log

### Top Navigation

- Home and Dashboard breadcrumb navigation
- Auto-refresh toggle (currently set to "Auto: off")
- User account display in top-right corner showing "ipenaa@zequenze.com" with organization "Zequenze"

# User Interactions

## Widget Controls

- **Time Range Selection:** 24-hour view with dropdown options
- **Data Export:** CSV export functionality available for all widgets
- **Chart Type Toggle:** Line view option available for Device Logs widget
- **Chart View Options:** Doughnut view selection available for Devices Per Status widget
- **Refresh Controls:** Manual refresh and auto-refresh settings

## Navigation

- Click on sidebar menu items to access different portal sections
- Expandable menu sections indicated by arrow icons
- Breadcrumb navigation for easy page tracking

## Navigation

### Access Path

- **URL:** `https://control-dev.zequenze.com/admin/`
- **Primary Navigation:** MAIN > Home > Dashboard
- **User Level:** Zequenze organization access required

## Related Sections

Users can navigate to specialized management areas through the sidebar:

- Device management via Inventory
- System configuration through Settings and Organization
- Monitoring and logging via User log sections

## Data Displayed

### Performance Metrics

- **Device Uptime:** Consistent availability (7 devices up for most time periods, with 4 devices up at earlier time periods)
- **Activity Patterns:** Device logs show significant spikes around Feb 12 8:00 pm and Feb 13 8:00 pm reaching approximately 1.0 events, with minimal activity levels maintained throughout the rest of the monitoring period
- **Status Distribution:** Small-scale deployment (178 total devices)
- **Time Series Data:** Extended time window showing daily patterns with hourly granularity

## System Information

- **Total Devices:** 178 managed devices
- **Active Monitoring:** Real-time status tracking
- **Historical Data:** Time-based trend analysis showing daily patterns
- **Status Categories:** Multiple device states tracked in pie chart with 171 devices in the primary status category and a small number in a secondary status

## Actions Available

### Dashboard Management

- **Export Data:** Download CSV reports for all widgets
- **Refresh Data:** Manual or automatic data updates
- **Time Range Adjustment:** Modify monitoring time windows
- **Chart View Customization:** Toggle between different chart types (Line view for Device Logs, Doughnut view for status charts)

### System Navigation

- **Quick Access:** Direct links to all major system functions
- **Configuration:** System settings and organizational controls
- **Monitoring:** Real-time and historical data analysis

## Notes/Tips

### Best Practices

- Monitor the "Devices Up" chart for consistent availability patterns
- Use the Device Logs graph to identify unusual activity spikes or anomalies such as the significant spikes observed around Feb 12 8:00 pm and Feb 13 8:00 pm

- Export data regularly for compliance and reporting purposes
- Enable auto-refresh for real-time monitoring scenarios
- Utilize chart view options (Line view toggle, Doughnut view) for optimal data visualization

## Performance Considerations

- The dashboard displays data for 178 devices, indicating small to medium-scale deployment
- Time-series data updates hourly for optimal performance
- CSV export functionality available for detailed analysis
- Dashboard widgets are optimized for real-time updates

## Access Requirements

- Zequenze organization privileges required for full dashboard access
- Development environment URL suggests testing/staging deployment
- User authentication via email-based accounts (ipenaa@zequenze.com shown)

---

Revision #24

Created 2025-11-11 08:09:59 UTC by ipena@zequenze.com

Updated 2026-03-05 22:25:38 UTC by ipena@zequenze.com